



## Intelligent Rack Power Distribution

### Dominion PX Series

Intelligent PDUs and inline meters that give you more control of power and cooling in the data center.

- ▶ Remote power monitoring and metering of current (amps), voltage, power (kVA, kW) and energy consumption (kWh)
- ▶ Capable of ISO/IEC +/-1% billing-grade accuracy
- ▶ Environment probe/sensor ready
- ▶ Power information from individual outlets, units, lines and circuit breakers
- ▶ Individual outlet and outlet group switching available
- ▶ User-configurable, outlet-level delays for power sequencing
- ▶ Ethernet and serial access
- ▶ Alerts via SNMP, e-mail and syslog when thresholds are exceeded
- ▶ Supports HTTP, HTTPS, SSH, Telnet and SNMP  
Advanced authorization options, including permissions, LDAP/S, RADIUS and Active Directory®
- ▶ 256-bit AES encryption and strong passwords

### Broadest portfolio of smart PDUs to enable energy management in the data center

The Raritan PX family of high-quality rack power distribution units (PDUs) offers real-time remote power monitoring of current (amps), voltage, power (kVA, kW) and energy consumption (kWh) with +/-1% billing-grade accuracy. The Dominion PX series offers hundreds of models to meet all your data center applications, including models with outlet switching, individual outlet metering, high power for blade servers and high density applications and 400V power distribution.

Raritan power management solutions help data center and facilities managers:

- ▶ Make informed capacity planning decisions
- ▶ Efficiently utilize power resources
- ▶ Improve uptime and staff productivity
- ▶ Save power and money
- ▶ Measure PUE (Power Usage Effectiveness) and drive green data center initiatives

### Monitor and manage power, energy and the data center environment

With PX, accurate real-time power monitoring and metering is now available down to the individual outlets. PX provides alerts based on pre-set power and environment events. All PXs are environment-monitoring ready and accept Raritan's plug-and-play environment probes and sensors. The PX intelligent rack PDU allows you to:

- ▶ Find stranded power in racks
- ▶ Load balance lines and circuits
- ▶ Trend and track energy utilization and bill power costs to users
- ▶ Measure CO2 footprint
- ▶ Remotely reboot servers and provision (turn on) power outlets in racks
- ▶ Detect data center hot spots
- ▶ Eliminate overcooling and increase temperature set points safely
- ▶ Support hot aisle containment and high-power blade racks

### Take a step towards Green Grid's PUE Level 3

Raritan's Dominion PX gives you the granular power information required to get to Green Grid's PUE Level 2 and Level 3. Coupled with Power IQ<sup>®</sup>, Raritan's energy management software, data center managers can now centralize power control and analytics from Raritan's intelligent PDUs and a wide range of third-party rack PDUs and UPSs, including those from APC<sup>®</sup> and Server Technology.

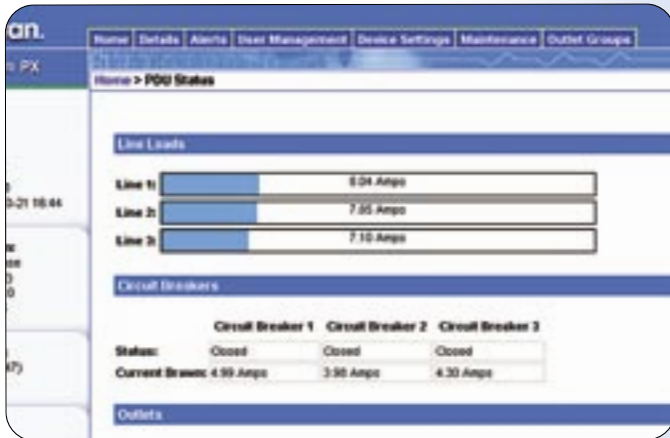


Know more. Manage smarter.™

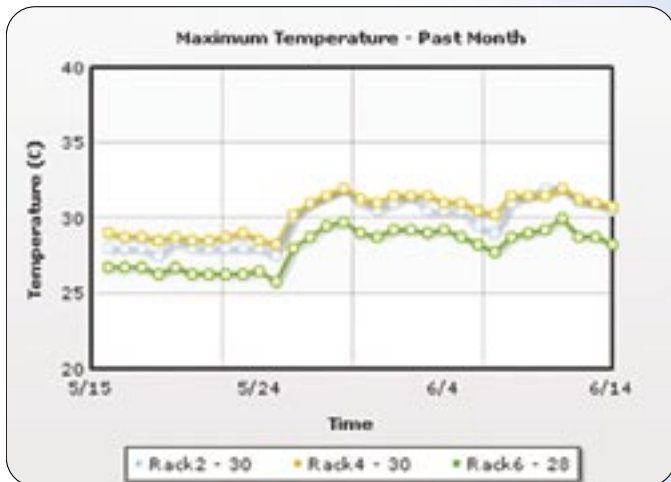
Call: +61 3 9866 6887/ +61 2 9029 2558/ +64 9 889 3136 E-mail: [sales.au@raritan.com](mailto:sales.au@raritan.com), [sales.nz@raritan.com](mailto:sales.nz@raritan.com)

# Simple, Web-Based Power and Energy Management

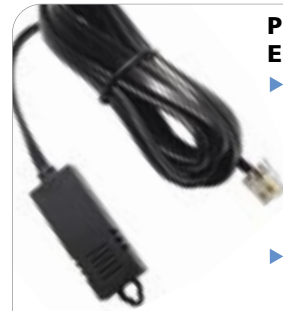
## PX Web-Based GUI



- ▶ Set power and environmental thresholds and receive alerts
- ▶ Check status of PDUs, lines, circuit breakers and individual outlets
- ▶ Monitor data center environment
- ▶ Remotely provision and switch outlets
- ▶ Configure user access rights and security



- ▶ Bulk configure multiple PXs to save time
- ▶ Centrally control outlets from PX and third-party PDUs
- ▶ Collect data from PX and third-party PDUs
- ▶ Polling from three seconds to every 24 hours
- ▶ Easy energy, environment and carbon footprint reports
- ▶ Open architecture to feed other data center management systems



### Plug-and-Play Optional Environmental Sensors

- ▶ Monitor temperature and humidity to identify hot spots, confidently raise the ambient temperature of your data center to reduce cooling power consumption and manage static problems
- ▶ Save costs by leveraging PX to monitor both power and data center environment



### High-Quality Construction and Components

- ▶ Solder connections to copper bus bars in PCBs
- ▶ ISO 9000 quality manufacturing
- ▶ Quality components from Tyco, Hubbell® and Mennekes®



### Outlet Metering with +/- 1% Accuracy

- ▶ Dedicated energy-metering chip per outlet
- ▶ Billing-grade power data (kWh) to report and/or billback power consumption
- ▶ User-adjustable power data sampling and buffering
- ▶ Rich data collected, including: V, A, kVA, kW, kWh

### Extruded Aluminum Chassis

- ▶ Up to 36% less deep than competitive products
- ▶ Designed with 3D CAD/CAM software
- ▶ Lightweight and strong with excellent heat dissipation
- ▶ Versatile button and bracket mounts



**UL489 Circuit Breakers**

- ▶ Meet Underwriters Laboratories' latest branch circuit protection standards
- ▶ Unlike fuses, do not require an electrician or an inventory of spares
- ▶ Eliminate the possibility of installing a fuse with the wrong rating



**Smart LED Display at the Rack**

- ▶ Scroll through and check individual outlet power consumption
- ▶ Check total PDU or branch circuit consumption before adding devices
- ▶ Check line draw and balance for three-phase rack PDUs
- ▶ Three-color outlet status LED indicates on, off, overload, circuit breaker open, PDU booting and firmware upgrade



**High Performance Processor**

- ▶ 20+ years of data center management and embedded development experience
- ▶ Scalability and headroom for future upgrades
- ▶ Rich and full implementation network management, directory services and security
- ▶ Best-in-class user experience

Clipsal Plug

## PX Specifications Chart

Part Number	Remote Outlet Switching	Form Factor	Input Voltage	Input Current per phase	Input Phase	Input Plug Type	Outlet Count	Outlet Type	Output Voltage	KVA
DPXR20A-16	Yes	2U	190 - 240	16A	Single Phase	IEC 16A	20	C13 x 20	190 - 240	3.0 - 3.8
DPXR20A-20L6	Yes	2U	190 - 240	16A	Single Phase	NEMA L6-20P	20	C13 x 20	190 - 240	3.0 - 3.8
DPXR20A-20L6-M	No	2U	190 - 240	16A	Single Phase	NEMA L6-20P	20	C13 x 20	190 - 240	3.0 - 3.8
DPXR20A-32	Yes	2U	200 - 240	32A	Single Phase	IEC 32A	20	C13 x 20	200 - 240	6.4 - 7.68
DPXR4X1A-16NP	No	1U	100 - 240	16A	Single Phase	C20 x 4	4	C19 x 4	100 - 240	1.6 - 3.8
DPXR8A-16	Yes	1U	200 - 240	16A	Single Phase	IEC 16A	8	C13 x 8	200 - 240	3.2 - 3.84
DPXR8A-16AU-M-3	Yes	1U	190 - 240	16A	Single Phase	Clipsal 56P320F	8	C13 x 8	190 - 240	3.0 - 3.8
DPXR8A-16C20	Yes	1U	190 - 240	16A	Single Phase	C20	8	C13 x 8	190 - 240	3.0 - 3.8
DPXR8A-16NP	Yes	1U	190 - 240	16A	Single Phase	NO PLUG	8	C13 x 8	190 - 240	3.0 - 3.8
DPXR8A-20AU	Yes	1U	190 - 240	20A	Single Phase	Clipsal 56P320F	8	C13 x 8	190 - 240	3.8 - 4.8
DPXR8A-20AU-M	No	1U	190 - 240	20A	Single Phase	Clipsal 56P320F	8	C13 x 8	190 - 240	3.8 - 4.8
DPXR8A-20L6	Yes	1U	200 - 240	16A	Single Phase	NEMA L6-20P	8	C13 x 8	200 - 240	3.2 - 3.8
DPXS12A-16	Yes	0U	190 - 240	16A	Single Phase	IEC 16A	12	C13 x 12	190 - 240	3.0 - 3.8
DPXS12A-20AU	Yes	0U	190 - 240	20A	Single Phase	Clipsal 56P320F	12	C13 x 12	190 - 240	3.8 - 4.8
DPXS12A-20AU-M	No	0U	190 - 240	20A	Single Phase	Clipsal 56P320F	12	C13 x 12	190 - 240	3.8 - 4.8
DPXS12A-32	Yes	0U	190 - 240	32A	Single Phase	IEC 32A	12	C13 x 12	190 - 240	6.1 - 7.7
DPXS12A-32AUA	Yes	0U	190 - 240	32A	Single Phase	Clipsal 56PA332	12	C13 x 12	190 - 240	6.1 - 7.7
DPXS12A-32AUA-M	No	0U	190 - 240	32A	Single Phase	Clipsal 56PA332	12	C13 x 12	190 - 240	6.1 - 7.7
DPXS20A-16	Yes	0U	190 - 240	16A	Single Phase	IEC 16A	20	C13 x 20	190 - 240	3.0 - 3.8
DPXS20A-16AU-M	No	0U	190 - 240	16A	Single Phase	Clipsal 56P320F	20	C13 x 20	190 - 240	3.0 - 3.8
DPXS20A-20AU	Yes	0U	190 - 240	20A	Single Phase	Clipsal 56P320F	20	C13 x 20	190 - 240	3.8 - 4.8
DPXS20A-20AU-M	No	0U	190 - 240	20A	Single Phase	Clipsal 56P320F	20	C13 x 20	190 - 240	3.8 - 4.8
DPXS20A-20L6	Yes	0U	190 - 240	16A	Single Phase	NEMA L6-20P	20	C13 x 20	190 - 240	3.0 - 3.8
DPXS20A-32	Yes	0U	190 - 240	32A	Single Phase	IEC 32A	20	C13 x 20	190 - 240	6.1 - 7.7
DPXS20A-32AUA	Yes	0U	190 - 240	32A	Single Phase	Clipsal 56PA332	20	C13 x 20	190 - 240	6.1 - 7.7
DPXS20A-32AUA-M	No	0U	190 - 240	32A	Single Phase	Clipsal 56PA332	20	C13 x 20	190 - 240	6.1 - 7.7
DPXS24A-16T	Yes	0U	200 - 240	16A	Single Phase	IEC 16A 3	24	C13 x 24	190 - 240	3.2 - 3.8
PX-3211	No	1U	100 - 240	16A	Single Phase	C20 x 2	2	C19 x 2	100 - 240	1.6 - 3.84
PX-3220	No	1U	100 - 240	32A	Single Phase	AC Terminal x 2	2	AC Terminal x 2	100 - 240	3.2 - 7.68
PX-3411	No	1U	100 - 240	16A	Single Phase	C20 x 4	4	C19 x 4	100 - 240	1.6 - 3.84
PX-3420	No	1U	100 - 240	32A	Single Phase	AC Terminal x 4	4	AC Terminal x 4	100 - 240	3.2 - 7.68
PX-4397	No	0U	190 - 240	32A	Single Phase	IEC 32A	16	C13 x 12, C19 x 4	190 - 240	6.1 - 7.7
PX-4397A1	No	0U	190 - 240	32A	Single Phase	Clipsal 56P332	16	C13 x 12, C19 x 4	190 - 240	6.1 - 7.7
PX-4397A2	No	0U	190 - 240	32A	Single Phase	Clipsal 56PA332	16	C13 x 12, C19 x 4	190 - 240	6.1 - 7.7
PX-4397N	No	0U	190 - 240	32A	Single Phase	NO PLUG	16	C13 x 12, C19 x 4	190 - 240	6.1 - 7.7
PX-4469T	No	0U	190 - 240	32A	Single Phase	IEC 32A	20	C13 x 16, C19 x 4	190 - 240	6.1 - 7.7
PX-4820	No	0U	200 - 240	32A	Single Phase	IEC 32A	16	C13 x 12, C19 x 4	200 - 240	6.4 - 7.7
PX-4820A1	No	0U	200 - 240	32A	Single Phase	Clipsal 56P332	16	C13 x 12, C19 x 4	200 - 240	6.4 - 7.7
PX-4820A2	No	0U	220 - 240	32A	Single Phase	Clipsal 56PA332	16	C13 x 12, C19 x 4	220 - 240	7.0 - 7.6
PX-4820N	No	0U	200 - 240	32A	Single Phase	NO PLUG	16	C13 x 12, C19 x 4	200 - 240	6.4 - 7.7

Part Number	Remote Outlet Switching	Form Factor	Input Voltage	Input Current per phase	Input Phase	Input Plug Type	Outlet Count	Outlet Type	Output Voltage	KVA
PX-5170	Yes	1U	190 - 240	32A	Single Phase	IEC 32A	8	C13 x 6, C19 x 2	190 - 240	6.1 - 7.7
PX-5192C-A0	Yes	1U	100 - 240	16A	Single Phase	C20	8	C13 x 8	100 - 240	1.6 - 3.8
PX-5297	Yes	0U	200 - 240	32A	Single Phase	IEC60 32A	12	C13 x 8, C19 x 4	190 - 240	6.4 - 7.7
PX-5367	Yes	0U	200 - 240	16A	Single Phase	IEC 16A	16	C13 x 14, C19 x 2	200 - 240	3.2 - 3.7
PX-5395U	Yes	0U	200 - 240	32A	Single Phase	IEC 32A	16	C13 x 12, C19 x 4	200 - 240	6.4 - 7.7
PX-5397	Yes	0U	190 - 240	32A	Single Phase	IEC 32A	16	C13 x 12, C19 x 4	190 - 240	6.1 - 7.7
PX-5397A1	Yes	0U	190 - 240	32A	Single Phase	Clipsal 56P332	16	C13 x 12, C19 x 4	190 - 240	6.1 - 7.7
PX-5397A2	Yes	0U	190 - 240	32A	Single Phase	Clipsal 56PA332	16	C13 x 12, C19 x 4	190 - 240	6.1 - 7.7
PX-5397N	Yes	0U	190 - 240	32A	Single Phase	NO PLUG	16	C13 x 12, C19 x 4	190 - 240	6.1 - 7.7
PX-5466	Yes	0U	190 - 240	32A	Single Phase	IEC 32A	20	C13 x 20	190 - 240	6.1 - 7.7
PX-5469	Yes	0U	190 - 240	32A	Single Phase	IEC 32A	20	C13 x 16, C19 x 4	190 - 240	6.1 - 7.7
PX-5469A2	Yes	0U	190 - 240	32A	Single Phase	Clipsal 56PA332	20	C13 x 16, C19 x 4	190 - 240	6.1 - 7.7
PX-5469A2T	Yes	0U	190 - 240	32A	Single Phase	Clipsal 56PA332	20	C13 x 16, C19 x 4	190 - 240	6.1 - 7.7
PX-5469T	Yes	0U	190 - 240	32A	Single Phase	IEC 32A	20	C13 x 16, C19 x 4	190 - 240	6.1 - 7.7
PX-5501	Yes	0U	190 - 240	32A	Single Phase	Clipsal P56PA332	24	C13 x 21, C19 x 3	190 - 240	6.1 - 7.7
PX-5635	Yes	0U	190 - 240	20A	Single Phase	Clipsal 56PA320	24	C13 x 21, C19 x 3	190 - 240	3.8 - 4.8
PX-5811T	Yes	0U	190 - 230	32A	Single Phase	IEC 32A	12	C13 x 6, C19 x 6	190 - 240	6.1 - 7.7
PX-5820	Yes	0U	200 - 240	32A	Single Phase	IEC 32A	16	C13 x 12, C19 x 4	200 - 240	6.4 - 7.7
PX-5820A1	Yes	0U	200 - 240	32A	Single Phase	Clipsal 56P332	16	C13 x 12, C19 x 4	200 - 240	6.4 - 7.7
PX-5820A2	Yes	0U	220 - 240	32A	Single Phase	Clipsal 56PA332	16	C19 x 4, C13 x 12	220 - 240	7.0 - 7.6
PX-5820N	Yes	0U	200 - 240	32A	Single Phase	NO PLUG	16	C13 x 12, C19 x 4	200 - 240	6.4 - 7.7
PX-5820T	Yes	0U	200 - 240	32A	Single Phase	IEC 32A	16	C13 x 12, C19 x 4	200 - 240	6.4 - 7.7
PX2-1176R	No	1U	200 - 240	16A	Single Phase	NEMA 6-20P	8	C13 x 8	200 - 240	3.2 - 3.8
PX2-1180R	No	1U	200 - 240	16A	Single Phase	NEMA L6-20P	8	C13 x 8	200 - 240	3.2 - 3.8
PX2-1190A1R	No	1U	240	20A	Single Phase	Clipsal 56P320	8	C13 x 8	240	4.8 - 4.8
PX2-1190A2R	No	1U	240	20A	Single Phase	Clipsal 56PA320	8	C13 x 8	240	4.8 - 4.8
PX2-1190A3R	No	1U	240	20A	Single Phase	Clipsal 56P320F	8	C13 x 8	240	4.8 - 4.8
PX2-1190CR	No	1U	100 - 240	16A	Single Phase	C20	8	C13 x 8	100 - 240	1.6 - 3.8
PX2-1190NR	No	1U	100 - 240	16A	Single Phase	NO PLUG	8	C13 x 8	100 - 240	1.6 - 3.8
PX2-1190R	No	1U	200 - 240	16A	Single Phase	IEC 16A	8	C13 x 8	200 - 240	3.2 - 3.8
PX2-1480	No	0U	200 - 240	16A	Single Phase	NEMA 6-20P	24	C13 x 24	200 - 240	3.2 - 3.8
PX2-1482	No	0U	200 - 240	16A	Single Phase	NEMA L6-20P	24	C13 x 24	200 - 240	3.2 - 3.8
PX2-1486	No	0U	200 - 240	16A	Single Phase	IEC 60 16A	24	C13 x 24	200 - 240	3.2 - 3.8
PX2-1486A1	No	0U	240	20A	Single Phase	Clipsal 56P320	24	C13 x 24	240	4.8 - 4.8
PX2-1486A2	No	0U	240	20A	Single Phase	Clipsal 56PA320	24	C13 x 24	240	4.8 - 4.8
PX2-1486A3	No	0U	240	20A	Single Phase	Clipsal 56P320F	24	C13 x 24	240	4.8 - 4.8
PX2-1486C	No	0U	100 - 240	16A	Single Phase	C20	24	C13 x 24	100 - 240	1.6 - 3.8
PX2-1493	No	0U	200 - 240	32A	Single Phase	IEC60 32A	24	C13 x 20, C19 x 4	200 - 240	6.4 - 7.7
PX2-1493A1	No	0U	240	32A	Single Phase	Clipsal 56P332	24	C13 x 20, C19 x 4	240 240	7.7 - 7.7
PX2-1493A2	No	0U	240	32A	Single Phase	Clipsal 56PA332	24	C13 x 20, C19 x 4	240 240	7.7 - 7.7
PX2-1493N	No	0U	200 - 240	32A	Single Phase	IEC60 32A	24	C13 x 20, C19 x 4	200 - 240	6.4 - 7.7

**\*No switching**

Cord length 10 ft (3 m). Add 3.5"/88mm (2U) to the height of the Zero U units for the PX power cable's radius of curvature. Allow approximately 4.5" (114mm) additional depth to accommodate the 1U and 2U brackets, device plugs and cables. Meter accuracy +/- < 5%. Tool-less button mounting included for Zero U models. Mounting brackets are included for 1U and 2U models.

## PX Specifications Chart

Part Number	Remote Outlet Switching	Form Factor	Input Voltage	Input Current per phase	Input Phase	Input Plug Type	Outlet Count	Outlet Type	Output Voltage	KVA
PX-3370	No	1U	190 - 415V	32A	3 Phase	AC Terminal x 3	3	AC Terminal x 3	190 - 415V	0.0 - 0.0
PX-4104	No	0U	380 - 415V	32A	3 Phase	IEC 32A 3P+N+PE	6	C19 x 6	220 - 240V	21.1 - 23.0
PX-4104A1	No	0U	380 - 415V	32A	3 Phase	Clipsal 56P532	6	C19 x 6	220 - 240V	21.1 - 23.0
PX-4104A2	No	0U	380 - 415V	32A	3 Phase	Clipsal 56PA532	6	C19 x 6	220 - 240V	21.1 - 23.0
PX-4104N	No	0U	380 - 415V	32A	3 Phase	NO PLUG	6	C19 x 6	220 - 240V	21.1 - 23.0
PX-4307	No	0U	380 - 415V	32A	3 Phase	IEC 32A 3P+N+PE	12	C19 x 12	220 - 240V	21.1 - 23.0
PX-4307A1	No	0U	380 - 415V	32A	3 Phase	Clipsal 56P532	12	C19 x 12	220 - 240V	21.1 - 23.0
PX-4307A2	No	0U	380 - 415V	32A	3 Phase	Clipsal 56PA532	12	C19 x 12	220 - 240V	21.1 - 23.0
PX-4307N	No	0U	380 - 415V	32A	3 Phase	NO PLUG	12	C19 x 12	220 - 240V	21.1 - 23.0
PX-4530	No	0U	380 - 415V	32A	3 Phase	IEC 32A 3P+N+PE	24	C13 x 21, C19 x 3	220 - 240V	21.1 - 23.0
PX-4530N	No	0U	380 - 415V	32A	3 Phase	NO PLUG	24	C13 x 21, C19 x 3	220 - 240V	21.1 - 23.0
PX-4917	No	0U	380 - 415V	32A	3 Phase	IEC 32A 3P+N+PE	24	C13 x 12, C19 x 12	220 - 240V	21.1 - 23.0
PX-4917A1	No	0U	380 - 415V	32A	3 Phase	Clipsal 56P532	24	C13 x 12, C19 x 12	220 - 240V	21.1 - 23.0
PX-4917A2	No	0U	380 - 415V	32A	3 Phase	Clipsal 56PA532	24	C19 x 12, C13 x 12	220 - 240V	23.0 - 23.0
PX-4917A2U	No	0U	380 - 415V	32A	3 Phase	Clipsal 56PA532	24	C19 x 12, C13 x 12	220 - 240V	23.0 - 23.0
PX-4917A2V	No	0U	415V	32A	3 Phase	Clipsal 56PA532	24	C19 x 12, C13 x 12	220 - 240V	23.0 - 23.0
PX-5314	Yes	0U	380 - 415V	16A	3 Phase	IEC 16A 3P+N+PE	12	C19 x 12	219 - 240V	10.5 - 11.5
PX-5315	Yes	0U	380 - 415V	16A	3 Phase	IEC 16A 3P+N+PE	12	C13 x 12	220 - 240V	10.5 - 11.5
PX-5318	Yes	0U	380 - 415V	32A	3 Phase	IEC 32A 3P+N+PE	12	C19 x 12	220 - 240V	21.1 - 23.0
PX-5318A2	Yes	0U	380 - 415V	32A	3 Phase	Clipsal 56PA532	12	C19 x 12	220 - 240V	21.1 - 23.0
PX-5514	Yes	0U	380 - 415V	16A	3 Phase	IEC 16A 3P+N+PE	24	C13 x 24	220 - 240V	10.5 - 11.5
PX-5528	Yes	0U	380 - 415V	32A	3 Phase	IEC 32A 3P+N+PE	24	C13 x 18, C19 x 6	220 - 240V	21.1 - 23.0
PX-5528N	Yes	0U	380 - 415V	32A	3 Phase	NO PLUG	24	C13 x 18, C19 x 6	220 - 240V	21.1 - 23.0
PX-5530	Yes	0U	380 - 415V	32A	3 Phase	IEC 32A 3P+N+PE	24	C13 x 21, C19 x 3	220 - 240V	21.1 - 23.0
PX-5530N	Yes	0U	380 - 415V	32A	3 Phase	NO PLUG	24	C13 x 21, C19 x 3	220 - 240V	21.1 - 23.0
PX-5628I	Yes	0U	360 - 415V	16A	3 Phase	IEC60 20A 3P	24	C13 x 18, C19 x 6	208 - 240V	10.0 - 11.5
PX-5906T	Yes	0U	380 - 415V	32A	3 Phase	IEC 32A 3P+N+PE	18	C13 x 12, C19 x 6	220 - 240V	21.1 - 23.0
PX-5917	Yes	0U	380 - 415V	32A	3 Phase	IEC 32A 3P+N+PE	24	C13 x 12, C19 x 12	220 - 240V	21.1 - 23.0
PX-5917A1	Yes	0U	380 - 415V	32A	3 Phase	Clipsal 56P532	24	C13 x 12, C19 x 12	220 - 240V	21.1 - 23.0
PX-5917A2	Yes	0U	380 - 415V	32A	3 Phase	Clipsal 56PA532	24	C19 x 12, C13 x 12	220 - 240V	21.0 - 23.0
PX-5917T	Yes	0U	380 - 415V	32A	3 Phase	IEC 32A 3P+N+PE	24	C13 x 12, C19 x 12	220 - 240V	21.1 - 23.0
PX2-1730	No	0U	380 - 415V	32A	3 Phase	IEC 32A 3P+N+PE	36	C13 x 24, C19 x 12	220 - 240V	21.1 - 23.0
PX2-1730A1	No	0U	415V	32A	3 Phase	Clipsal 56P532	36	C13 x 24, C19 x 12	240 - 240V	23.0 - 23.0
PX2-1730A2	No	0U	415V	32A	3 Phase	Clipsal 56PA532	36	C13 x 24, C19 x 12	240 - 240V	23.0 - 23.0
PX2-1730N	No	0U	380 - 415V	32A	3 Phase	NO PLUG	36	C13 x 24, C19 x 12	220 - 240V	21.1 - 23.0

# Plugs and Receptacles Configuration Chart

## IEC

RECEPTACLE

PLUG



IEC 6H-R  
20 Ampere 250 Volt UL/CSA  
16 Ampere 230 Volt European CE Mark

RECEPTACLE

PLUG

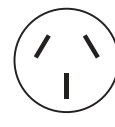


IEC 6H-R  
30 Ampere 250 Volt UL/CSA  
32 Ampere 230 Volt European CE Mark

## Clipsal (Industrial Plugs – IP66 rating)

RECEPTACLE

PLUG



2A

2A



IEC C-13  
15 Ampere 250 Volt UL/CSA  
10 Ampere 250 Volt International



IEC C-19  
20 Ampere 250 Volt UL/CSA  
16 Ampere 250 Volt International



2A

2A

## OTHER

PLUG



CS-8365-C  
California Style, 50 Ampere,  
250 Volt, 3-pole, 4-wire



2A

2A



0U model

1U model

2U model

# Quality Rack PDUs with Intelligence

A rapidly expanding product line to meet rapidly evolving data center needs

	Outlet Metered, Outlet Switched	Outlet Metered	Inline Metered	PDU Metered
<b>Dominion PX Family</b>	PX-5000 and DPX	PX-4000	PX-3000	PX-1000
<b>Power Metering</b>	Outlet, PDU	Outlet, PDU	Line, Circuit	Line, Circuit
<b>Outlet Switching</b>	•			
<b>Outlet Mapping</b>				
<b>to Raritan KVM Switches</b>	•			
<b>Circuit Breaker Monitoring</b>	•	•		•
<b>Environment Probe/Sensor Ready</b>	•	•	•	•
<b>Directory Services Support (Active Directory, LDAP/S, RADIUS, local)</b>	•	•	•	•
<b>SNMP Manageable</b>	•	•	•	•
<b>Thresholds and Alerts for Power and Sensors</b>	•	•	•	•
<b>High Temp 60° C Models Available</b>	•	•	•	•
<b>Remote Access via Web and CLI</b>	•	•	•	•
<b>Compatible with Power IQ Energy Management Software</b>	•	•	•	•

## Broad range of options built to your specific needs

Hundreds of PX models available in numerous configurations:

- ▶ 100V, 208V, 230V and 400V inputs
- ▶ Single-phase and three-phase power
- ▶ 15A to 80A input
- ▶ Zero U, 1U and 2U form factors
- ▶ NEMA, IEC, Clipsal® and more plugs and receptacles
- ▶ Mixed outlet and voltage configurations
- ▶ Certifications include FCC Part 15, A, UL and cUL 60950, CE, plus PSE certified for Japan
- ▶ RoHS/WEEE compliant

To view PX screenshots, go to [www.raritan.com.au/resources/screenshots/](http://www.raritan.com.au/resources/screenshots/)

For SKUs, detailed specifications and mechanical drawings, or to test drive PX and Power IQ, go to [www.raritan.com.au/products/power-management/](http://www.raritan.com.au/products/power-management/)

Call: +61 3 9866 6887/ +61 2 9029 2558/ +64 9 889 3136

E-mail: [sales.au@raritan.com](mailto:sales.au@raritan.com), [sales.nz@raritan.com](mailto:sales.nz@raritan.com)

or visit [www.raritan.com.au](http://www.raritan.com.au) today.

© 2010 Raritan Inc. All rights reserved. Raritan®, Know more. Manage smarter.™, Dominion®, Power IQ® and PX™ are registered trademarks or trademarks of Raritan Inc. or its wholly-owned subsidiaries. All others are registered trademarks or trademarks of their respective owners. Raritan is a leading provider of secure IT infrastructure management solutions that provide IT directors, managers and administrators the control they need to optimize data center productivity, enhance branch office operations and increase overall power management efficiency. In over 50,000 locations around the world, our integrated secure in-band and out-of-band server access, control and power management products help companies better monitor and manage server access, utilization and energy consumption. Raritan's OEM division provides advanced embedded hardware and firmware for server and client management, including KVM over IP, IPMI, intelligent power management and more. Raritan is serving customers in over 76 countries. For more information, please visit [Raritan.com](http://Raritan.com)

Call: +61 3 9866 6887/ +61 2 9029 2558/ +64 9 889 3136 E-mail: [sales.au@raritan.com](mailto:sales.au@raritan.com), [sales.nz@raritan.com](mailto:sales.nz@raritan.com)